



**GENERATIONS
ENERGY**

Yanglin Solutions



+64 21588987



Trevor@Generations.nz



www.Generations.nz



Bon Accord Way 30-32 Sophie Rd, Warkworth, 0982.
North Auckland, New Zealand.



Why Choose Generations Energy?

- Environmental Commitment**
Committed to combating climate change, GENERations' solutions positively impact the environment and reduce costs.
- Industry Experts**
Operating since 2023, GENERations serves numerous clients with extensive knowledge and experience in renewable energy.
- Industry Standards**
Adhering to strict standards, GENERations ensures high-quality results and excellent service.
- All-In-One Solution**
From initial survey to project completion, GENERations has the expertise to manage it all seamlessly.
- Adaptable Solutions**
Customer-centered, GENERations adapts to client needs and goals, delivering first-class solutions on time and within budget.
- Global Partnerships**
Strong partnerships with leading technology brands ensure world-class solutions.



阳霖(厦门)机械科技有限公司
YANGLIN TECH CO., LTD

Trusted New Zealand Partner:

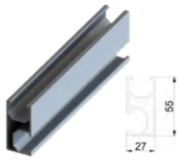


Located in Xiamen, China, YANGLIN TECH CO., LTD ("YANGLIN") is a high-tech enterprise which specializes in researching and developing, production and sales. YANGLIN has the experienced engineer team with more than 10 years industry experience and committed to provide global customers with easy installation, economic and effective solar mounting system solution through high quality products and excellent service.

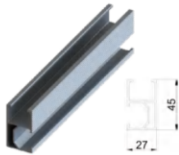
To meet different customers' requirements, YANGLIN has developed solar Ground Mounting System, Tile Roof Mounting Systems, Tin Roof Mounting Systems, Flat concrete Roof Mounting Systems, Solar Carport, Solar Mounting System Accessories, etc. The product category covers residential, commercial and public utilities fields. Besides, the products have obtained AS/NZS1170, UL, ISO9001 and other international certifications. Except for providing standardized solution, we still provide customized solution according to actual demand.

Since its establishment in 2012, YANGLIN adheres to takes "Honesty" as code of practice and has established stable cooperative relationship with clients from 100+ countries or regions. YANGLIN has become one of the biggest exporters of solar PV mounting system in China.

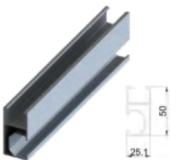




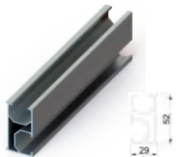
Item No.	Material	Thickness	Length	Surface Finish
YL-R02	AL6005-T5	1.3mm	3600/4200/	Silver/
YL-R07	AL6005-T5	1.5mm	4400mm/ or customized	Black anodized



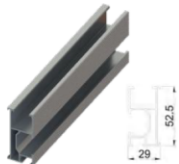
Item No.	Material	Thickness	Length	Surface Finish
YL-R05	AL6005-T5	1.3mm	3600/4200/	Silver/
YL-R08	AL6005-T5	1.5mm	4400mm/ or customized	Black anodized



Item No.	Material	Thickness	Length	Surface Finish
YL-R06	AL6005-T5	1.0mm	3600/4200/	Silver/
YL-R40	AL6005-T5	1.2mm	4400mm/ or customized	Black anodized



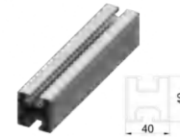
Item No.	Material	Thickness	Length	Surface Finish
YL-R11	AL6005-T5	1.2mm	3600/4200/ 4400mm/ or customized	Silver/ Black anodized



Item No.	Material	Thickness	Length	Surface Finish
YL-R44	AL6005-T5	1.2mm	3600/4200/ 4400mm/ or customized	Silver/ Black anodized



Item No.	Material	Thickness	Length	Surface Finish
YL-R12	AL6005-T5	1.3mm	3600/4200/ 4400mm/ or customized	Silver/ Black anodized



Item No.	Material	Thickness	Length	Surface Finish
YL-R13	AL6005-T5	1.3mm	3600/4200/ 4400mm/ or customized	Silver/ Black anodized



Item No.	Material	Thickness	Length	Surface Finish
YL-R17	AL6005-T5	1.2mm	3600/4200/ 4400mm/ or customized	Silver/ Black anodized



Item No.	Material	Thickness	Length	Surface Finish
YL-R20	AL6005-T5	1.2mm	3600/4200/ 4400mm/ or customized	Silver/ Black anodized



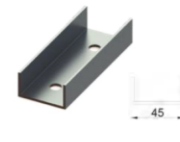
Item No.	Material	Thickness	Length	Surface Finish
YL-R02-S	AL6005-T5		200mm	Silver anodized

* Rail splice for most of YANGJIN's aluminum roof rails.



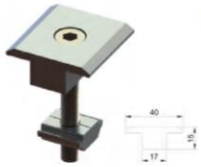
Item No.	Material	Thickness	Length	Surface Finish
YL-R02-SPK	AL6005-T5		150mm	Silver anodized

* Rail splice for most of YANGJIN's aluminum roof rails.



Item No.	Material	Thickness	Length	Surface Finish
YL-R12-S	AL6005-T5		120mm	Silver anodized

* Rail splice for most of YANGJIN's aluminum roof rails.



Item No.	Material	For Solar Panel	Length	Surface Finish
YL-IC-30	AL6005-T5	30mm	40mm	Silver/
YL-IC-35	AL6005-T5	35mm	40mm	Black anodized
YL-IC-40	AL6005-T5	40mm	40mm	
YL-IC-45	AL6005-T5	45mm	40mm	



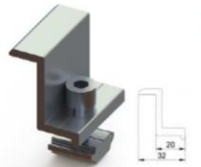
Item No.	Material	For Solar Panel	Length	Surface Finish
YL-MC20-30	AL6005-T5	30mm	40mm	Silver/
YL-MC20-35	AL6005-T5	35mm	40mm	Black anodized
YL-MC20-40	AL6005-T5	40mm	40mm	
YL-MC20-45	AL6005-T5	45mm	40mm	



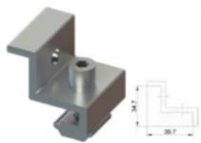
Item No.	Material	For Solar Panel	Length	Surface Finish
YL-MC27-30	AL6005-T5	30mm	40mm	Silver/
YL-MC27-35	AL6005-T5	35mm	40mm	Black anodized
YL-MC27-40	AL6005-T5	40mm	40mm	
YL-MC27-45	AL6005-T5	45mm	40mm	



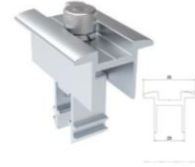
Item No.	Material	For Solar Panel	Length	Surface Finish
YL-IC19-30	AL6005-T5	30mm	40mm	Silver/
YL-IC19-35	AL6005-T5	35mm	40mm	Black anodized
YL-IC19-40	AL6005-T5	40mm	40mm	
YL-IC19-45	AL6005-T5	45mm	40mm	



Item No.	Material	For Solar Panel	Length	Surface Finish
YL-SC-30	AL6005-T5	30mm	40mm	Silver/
YL-SC-35	AL6005-T5	35mm	40mm	Black anodized
YL-SC-40	AL6005-T5	40mm	40mm	
YL-SC-45	AL6005-T5	45mm	40mm	



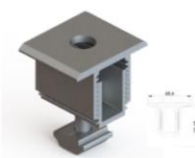
Item No.	Material	For Solar Panel	Length	Surface Finish
YL-SC-35/45	AL6005-T5	35-40mm	40mm	Silver/ Black anodized



Item No.	Material	For Solar Panel	Length	Surface Finish
YL-UMC	AL6005-T5	30-40mm	40mm	Silver/ Black anodized



Item No.	Material	For Solar Panel	Length	Surface Finish
YL-UEC	AL6005-T5	30-40mm	40mm	Silver/ Black anodized



Item No.	Material	For Solar Panel	Length	Surface Finish
YL-AMC	AL6005-T5	30-45mm	40mm	Silver/ Black anodized



Item No.	Material	For Solar Panel	Length	Surface Finish
YL-AEC	AL6005-T5	30-45mm	40mm	Silver/ Black anodized



Item No.	Material	For Solar Panel	Length	Surface Finish
YL-TF-MC-80	AL6005-T5	5.5-9mm	80mm	Silver/
YL-TF-MC-150	AL6005-T5	5.5-9mm	150mm	Black anodized



Item No.	Material	For Solar Panel	Length	Surface Finish
YL-TF-EC-80	AL6005-T5	5.5-9mm	80mm	Silver/
YL-TF-EC-150	AL6005-T5	5.5-9mm	150mm	Black anodized



Item No.: YL-TH-1
Material: SUS304/ A2-70
Length: 100mm
Surface Finish: Shot Blasting



Item No.: YL-TH-2
Material: SUS304/ A2-70
Length: 100mm
Surface Finish: Shot Blasting



Item No.: YL-TH-4
Material: SUS304/ A2-70
Length: 100mm
Surface Finish: Shot Blasting



Item No.: YL-CC-01
Material: SUS304/ A2-70
Size: 10x19mm
Spec: For 1-2 cables



Item No.: YL-CC-02
Material: SUS304/ A2-70
Size: 10x23mm
Spec: For 1-2 cables



Item No.: YL-CC-03
Material: SUS304/ A2-70
Size: 18x21mm
Spec: For 1-2 cables



Item No.: YL-TCB-01
Material: AL6005-T5
Length: 50mm
Surface Finish: Anodized



Item No.: YL-TCB-03
Material: AL6005-T5
Length: 50mm
Surface Finish: Anodized



Item No.: YL-TCB-05
Material: AL6005-T5
Length: 50mm
Surface Finish: Anodized



Item No.: YL-CC-04
Material: SUS304/ A2-70
Size: 18x32mm
Spec: For 1-4 cables



Item No.: YL-CC-05
Material: SUS304/ A2-70
Size: 12.5x25mm
Spec: For 1-2 cables



Item No.: YL-CC-06
Material: SUS304/ A2-70
Size: 12x20mm
Spec: For 1-2 cables



Item No.: YL-TCB-06
Material: SUS304/ A2-70
Length: 110mm
Surface Finish: Shot Blasting



Item No.: YL-TCB-12
Material: AL6005-T5
Length: 50mm
Surface Finish: Anodized



Item No.: YL-TCB-13
Material: AL6005-T5
Length: 50mm
Surface Finish: Anodized



Item No.: YL-GC-01
Material: SUS304/ A2-70
Size: 30x32mm



Item No.: YL-GC-03
Material: SUS304/ A2-70
Size: 50x42mm



Item No.: YL-GC-04
Material: SUS304/ A2-70
Size: 70x40x15mm



Item No.: YL-TCB-15
Material: AL6005-T5
Length: 50mm
Surface Finish: Anodized



Item No.: YL-TCB-17
Material: AL6005-T5
Length: 100mm
Surface Finish: Anodized



Item No.: YL-LSMA
Material: AL6005-T5
Length: 40mm
Surface Finish: Anodized



Item No.: YL-GC-06
Material: SUS304/ A2-70
Size: 30x32mm



Item No.: YL-GL-01
Material: AL6005-T5
Size: 20*40mm



Item No.: YL-CKS-01
Material: Cu
Size: 200mm



Item No.: YL-AB-M8xL
 Material: SUS304/ A2-70
 Length: 20-50mm
 Standard: DIN 912



Item No.: YL-HB-M10xL
 Material: SUS304/ A2-70
 Length: 20-50mm
 Standard: DIN 933



Item No.: YL-TB-M10xL
 Material: SUS304/ A2-70
 Length: 20-50mm
 Standard: 23x14x4mm



Item No.: YL-ABS-4P
 Material: ABS
 Color: Black/ White



Item No.: YL-ABS-5P
 Material: ABS
 Color: Black/ White



Item No.: YL-ABS-7P
 Material: ABS
 Color: Black/ White



Item No.: YL-SN-M8
 Material: SUS304/ A2-70
 Size: M8
 Standard: DIN 557



Item No.: YL-HM-M10
 Material: SUS304/ A2-70
 Size: M10
 Standard: DIN 934



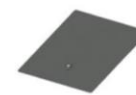
Item No.: YL-FN-M10
 Material: SUS304/ A2-70
 Size: M10
 Standard: DIN 6923



Item No.: YL-CC-04
 Material: ABS
 Color: Black/ White
 Spec: 550mm



Item No.: YL-CC-05
 Material: ABS
 Color: Black/ White
 Spec: 680mm



Item No.: YL-CC-06
 Material: AL6005-T5
 Color: 305x205mm
 Spec: Black/ Silver



Item No.: YL-ST-M6.3xL
 Material: Q235B + Dacromet
 Length: 38/ 80mm



Item No.: YL-SD-M6.3xL
 Material: SUS410
 Length: 38/ 80mm



Item No.: YL-AB-M8xL
 Material: SUS304+AL6005-T5
 Length: 20/ 25mm



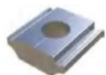
Item No.: YL-ZB-01
 Material: AL5052
 Size: 50.5x62x30mm
 Surface Finish: Anodized



Item No.: YL-ZB-03
 Material: AL5052
 Size: 100x65x42mm
 Surface Finish: Anodized



Item No.: YL-ZB-04
 Material: AL5052
 Size: 100x62x29mm
 Surface Finish: Anodized



YL-MTYL01-JG
 M8 aluminum nut



YL-SN-27X13
 M8 stainless steel nut



YL-NUT-SP
 M8 carbon steel nut



YL-BN-ALB
 M8 ball nut



Item No.: YL-MC4
 Material: PPO
 For cable: 2.5-6mm2
 Rated Voltage: 1000V



Item No.: YL-PV-C1x4
 Material: Tinned copper
 Spec: 4mm2
 Color: Black/ Red

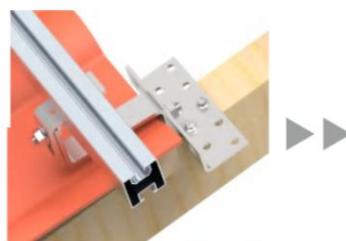


Item No.: YL-PV-C1x6
 Material: Tinned copper
 Spec: 6mm2
 Color: Black/ Red













YANGLIN's Pitched Tile Roof Mounting system provides various hooks and rails. The rail can be side-mounted or bottom-mounted according to different demand, high quality and cost-effective.



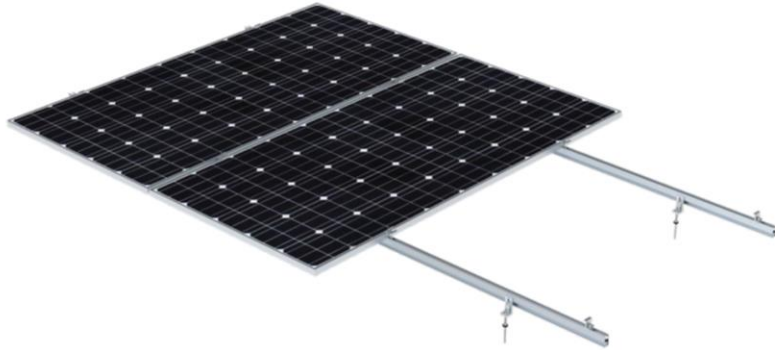
Side-Mount



Bottom-Mount

 Item No.: YL-RH-CT1 Material: SUS304/ A2-70 Hook Plate: 180x50mm Surface Finish: Shot Blasting	 Item No.: YL-RH-CT1A Material: SUS304/ A2-70 Hook Plate: 180x50mm Surface Finish: Shot Blasting	 Item No.: YL-RH-CT3 Material: SUS304/ A2-70 Hook Plate: 180x50mm Surface Finish: Shot Blasting
 Item No.: YL-RH-FT4 Material: SUS304/ A2-70 Hook Plate: 140x50mm Surface Finish: Shot Blasting	 Item No.: YL-RH-FT1 Material: SUS304/ A2-70 Hook Plate: 286mm Surface Finish: Shot Blasting	 Item No.: YL-RH-ST1 Material: SUS304/ A2-70 Hook Plate: 200mm Surface Finish: Shot Blasting
 Item No.: YL-RH-FT5 Material: SUS304/ A2-70 Hook Plate: 140x50mm Surface Finish: Shot Blasting	 Item No.: YL-RH-CT5 Material: SUS304/ A2-70 Hook Plate: 180x50mm Surface Finish: Shot Blasting	 Item No.: YL-RH-CT7 Material: SUS304/ A2-70 Hook Plate: 180x50mm Surface Finish: Shot Blasting
 Item No.: YL-RH-FT2 Material: SUS304/ A2-70 Hook Plate: 286mm Surface Finish: Shot Blasting	 Item No.: YL-RH-ST2 Material: SUS304/ A2-70 Hook Plate: 200mm Surface Finish: Shot Blasting	 Item No.: YL-RH-ST3 Material: SUS304/ A2-70 Hook Plate: 200mm Surface Finish: Shot Blasting

YANGLIN's Pitched Metal Roof Mounting provides different roof penetration solutions for both wood and steel purlin, easy for installation and good waterproof effect.



Item No.: **YL-TH-L-B**
 Material: AL6005-T5
 Size: 40x40x80mm
 Surface Finish: Anodized



Item No.: **YL-TH-L-A**
 Material: AL6005-T5
 Size: 40x40x80mm
 Surface Finish: Anodized



Item No.: **YL-TH-L-F**
 Material: AL6005-T5
 Size: 40x40x80mm
 Surface Finish: Anodized

① Self drilling screw for steel purlin, SUS410
 ② Self tapping screw for wood purlin, Q235B with dacromet coating



Item No.: **YL-TH-L-E**
 Material: AL6005-T5
 Size: 40x40x155mm
 Surface Finish: Anodized



Item No.: **YL-TH-L-SS**
 Material: SUS304/ A2-70
 Size: 40x40x80mm
 Surface Finish: Shot Blasting



Item No.: **YL-AP-82X**
 Material: SUS304/ A2-70
 Size: 82x30mm
 Surface Finish: Shot Blasting



Item No.: **YL-M10*L**
 Material: SUS304/ A2-70
 Length: 200/ 250/ 300mm
 Thread Pitch: 3/ 4.5mm



Item No.: **YL-M10x200**
 Material: 1022A
 Length: 200mm
 Surface Finish: Zinc-Nickel alloys coating



Item No.: **YL-M10x200**
 Material: SUS304/ A2-70
 Length: 200/ 250/ 300mm

* For wood purlin.

* With self drilling tip for steel purlin.

* With grooves thread for steel purlin.

YANGLIN's Railless Metal Roof Mounting is designed for trapezoid steel roof. It can be fixed on roof directly without Aluminum rail, to make the installation easy and convenient. It can significantly save the costs.



Item No.: YL-TCB-10
 Material: AL6005-T5
 Height: 30mm
 Length: 120mm
 Surface Finish: Anodized

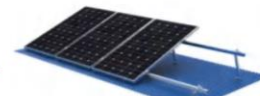


Item No.: YL-UR22-380
 Material: AL6005-T5
 Height: 22mm
 Length: 380mm
 Surface Finish: Anodized



Item No.: YL-UR46-380
 Material: AL6005-T5
 Height: 45mm
 Length: 380mm
 Surface Finish: Anodized

YANGLIN's Adjustable Metal Roof Mounting has a wide range of adjustable angle to maximize the power generation efficiency.



Item No.: YL-AFL
 Material: AL6005-T5
 Surface Finish: Anodized



Item No.: YL-ARL
 Material: AL6005-T5
 Adjustable Angel: 10-15/ 15-30/ 30-60 degree
 Surface Finish: Anodized



F1 Flat Roof Ballasted Mounting System

F1 is a high quality and quick ballasted mounting solution for flat roofs. All the components are pre-punched and highly pre-assembled. The installers can easily align the front & rear legs and then fix them easily by plug in and rotate a T bolt. The system provides different rail length and 2 ballasting options to make the installation more flexible.



East-West orientation

South orientation



YL-F1

Key Features

Tilt Angle	10°, 15°, or customized
Solar Pane Width	992-1150 mm
Solar Pane Thickness	30-45 mm
Solar Panel Orientation	East-West or South
Material	AL6005-T5 & SUS304



YL-F1-BB

Rail



YL-F1BB-S

Rail Splice



YL-F1-UPAD

EPDM Pad



YL-F1-FL

Front Leg



YL-F1-RL

Rear Leg



YL-SC-35/L60

End Clamp



YL-F1-SBP

Steel
Ballasted
Pan



YL-F1-ABP

Aluminum
Ballasted
Pan



YL-F1-WS

Wind Shield

F2 Flat Roof Ballasted Mounting System

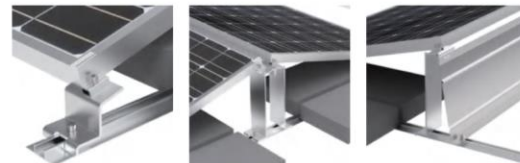


F2 Flat Roof Ballasted Mounting System covers a wide range of tilt angle from 5-15 degree or even bigger. The smaller gap between two panels can help to reduce the impact from wind load. All the components are pre-assembled and compact packed in order to save the transport costs.



East-West orientation

South orientation



YL-F2

Key Features

Tilt Angle	5°, 10°, 15°, or customized
Solar Pane Width	992-1150 mm
Solar Pane Thickness	30-45 mm
Solar Panel Orientation	East-West or South
Material	AL6005-T5 & SUS304



YL-R41

Rail



YL-R02-S

Rail Splice



YL-F2-FL

Front Leg



YL-F2-RL

Rear Leg



YL-F2-TRL

Double Rear Leg



YL-MCA1-35

Mid Clamp



YL-SC-35T

End Clamp



YL-F2-SBP

Steel
Ballasted
Pan



YL-F2-WS

Wind Shield

F3 is a special designed ballasted mounting solution for portrait solar panel array. It will be able to maximize the utility of roof area.

YANGLIN's Z-Type Ballasted Mounting System is a railless solution for flat roof. With very few components, it's very convenient for various solar panel array, flexible and low costs.



East-West orientation

South orientation



YL-F3

Key Features

Tilt Angle	10°, 15°, or customized
Solar Pane Width	No limit
Solar Pane Thickness	30-45 mm
Solar Panel Orientation	East-West or South
Material	AL6005-T5 & SUS304



YL-Z1

Key Features

Tilt Angle	5°, 10°, 15°, or customized
Solar Pane Width	992-1150 mm
Solar Pane Thickness	30-45 mm
Solar Panel Orientation	South
Material	Hot dip galvanized steel





Balcony Mounting Bracket

YANGLIN's Balcony Mounting Brackets offer a simple and cost-effective solution for installing solar panels on balconies. The brackets are made from high strength steel and aluminum which will make sure the solar panel is securely mounted. With a wide adjustable angle, they allows the solar panel to achieve optimal power generation efficiency.



YL-BAL-B

Key Features	
Adjustable Angle	20-50 degree, or customized
Maximum Solar Panel Width	1150 mm
Solar Panel Thickness	30-45 mm
Solar Panel Orientation	Landscape
Material	AL6005-T5/ SUS304

YL-BAL-3

Key Features	
Adjustable Angle	10-60 degree, or customized
Maximum Solar Panel Width	No limit
Solar Panel Thickness	30-45 mm
Solar Panel Orientation	Landscape
Material	AL6005-T5/ SUS304

Single Panel Mounting Kit



YANGLIN's Single Panel Mounting Kit provides a quick and simple solution for installing solar panels in landscape. It's a complete system ready to use for attaching solar panels onto any flat surface and It can also be used when away from home.



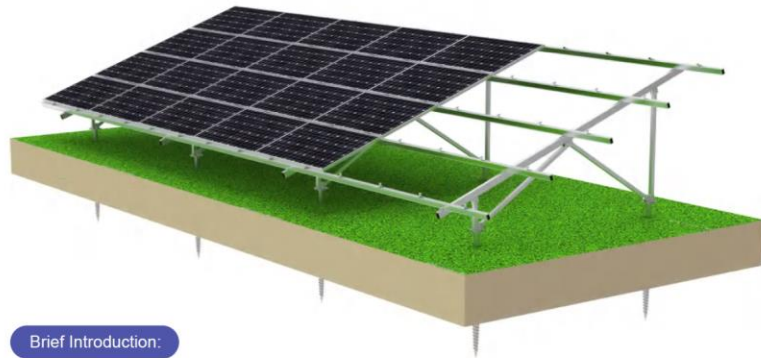
Adjustable Front and Rear Leg

Key Features	
YL-AFL	Front leg
YL-ARL-15	Rear leg, 10-15 degree
YL-ARL-30	Rear leg, 15-30 degree
YL-ARL-60	Rear leg, 30-60 degree
Material	AL6005-T5/ SUS304

Adjustable Triangle Bracket

Key Features	
YL-ATT-22	556 x 556 x 290mm
YL-ATT-28	712 x 712 x 375mm
YL-ATT-41	1040 x 1040 x 545mm
YL-ATT-45	1148 x 1148 x 575mm
Material	AL6005-T5/ SUS304

Yanglin Alu Ground Mounting is applicable for open field, it can be installed for residential or commercial project. High pre-assembled makes install efficient and easy. The structure is made by high quality Aluminum alloy.



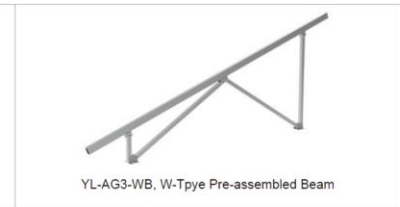
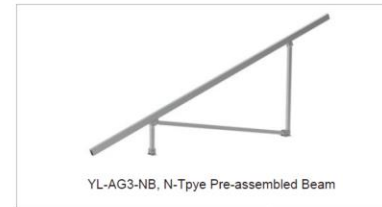
Brief Introduction:

Install Site: Open Filed
 Module Tilt Angle: 5-40 degree
 Max Wind Speed: 60 m/s
 Snow Load: 1.4 KN/m2
 Material: Aluminum 6005-T5
 Foundation: Ground screw or concrete block

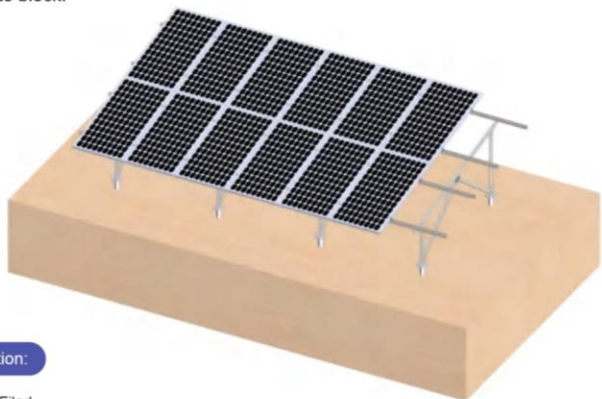
Installation Guide:



Components:



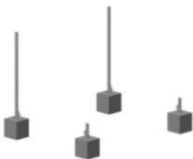


Yanglin Steel Ground Mounting structure is applicable for open field PV mounting system. The steadiness and safety of this system are compatible with the structure mechanics and construction acts. There are two types of foundation for you to choose, one is ground screw, the other is concrete block.




Brief Introduction:

Install Site: Open Filed
 Module Tilt Angle: 5-40 degree
 Max Wind Speed: 60 m/s
 Snow Load: 1.4 KN/m²
 Material: Q235B/ SCS
 Surface: HDG(Hot Dipped Galvanized)/ Zn-Al-Mg coating.
 Foundation: Ground screw or concrete block

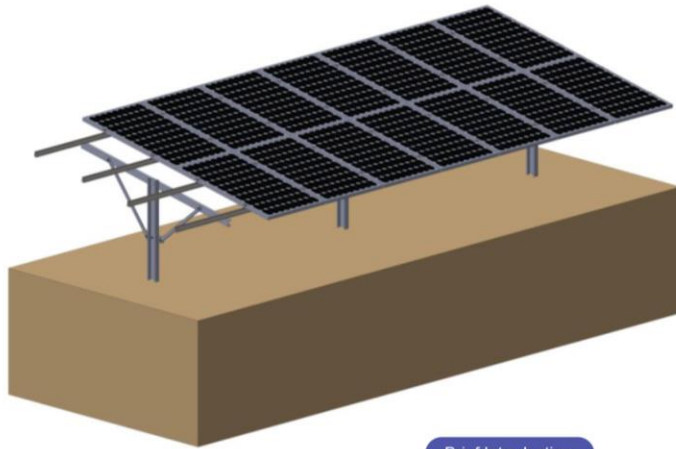
Installation Guide:

 <p>Step 1: Fix front leg and rear leg.</p>	 <p>Step 2: Fix prepare beam.</p>	 <p>Step 3: Install rail on beam and fix panel by clamp on rail until finished.</p>
---	---	---

Components:

 <p>Item No.: YL-R04-62-1 Material: Q235B Size: 41.3X62mm Thickness: 1.5/ 2.0/ 2.5mm Surface Finish: HDG</p>	 <p>Item No.: YL-R04-41-1 Material: Q235B Size: 41.3X41.3mm Thickness: 1.5/ 2.0/ 2.5mm Surface Finish: HDG</p>	 <p>Item No.: YL-R04-21-1 Material: Q235B Size: 41.3X21mm Thickness: 1.5/ 2.0/ 2.5mm Surface Finish: HDG</p>
 <p>Item No.: YL-R04-62-2 Material: SCS Size: 41.3X62mm Thickness: 1.5/ 2.0/ 2.5mm Surface Finish: Zn-Al-Mg coating</p>	 <p>Item No.: YL-R04-41-2 Material: SCS Size: 41.3X41.3mm Thickness: 1.5/ 2.0/ 2.5mm Surface Finish: Zn-Al-Mg coating</p>	 <p>Item No.: YL-R04-21-2 Material: SCS Size: 41.3X21mm Thickness: 1.5/ 2.0/ 2.5mm Surface Finish: Zn-Al-Mg coating</p>
 <p>Item No.: YL-R04-1/2 Material: Q235B/ SCS Size: 50X60/ 40/ 23mm Thickness: 200mm Surface Finish: HDG/ Zn-Al-Mg coating</p>	 <p>Item No.: YL-SG1-TC-1/2 Material: Q235B/ SCS Size: 48X63mm Thickness: 150mm Surface Finish: HDG/ Zn-Al-Mg coating</p>	 <p>Item No.: YL-SG1-FU/ RL Material: Q235B/ SCS Size: 160X60mm Thickness: Customized Surface Finish: HDG/ Zn-Al-Mg coating</p>
 <p>Item No.: YL-IC-C Material: AL6005-T5 For Solar Panel: 30-45mm Surface Finish: Anodized</p>	 <p>Item No.: YL-SC-C Material: AL6005-T5 For Solar Panel: 30-45mm Surface Finish: Anodized</p>	 <p>Item No.: YL-BR-04 Material: SUS304+Q235B For Solar Panel: M10X30mm Surface Finish: HDG/ Zn-Al-Mg coating</p>

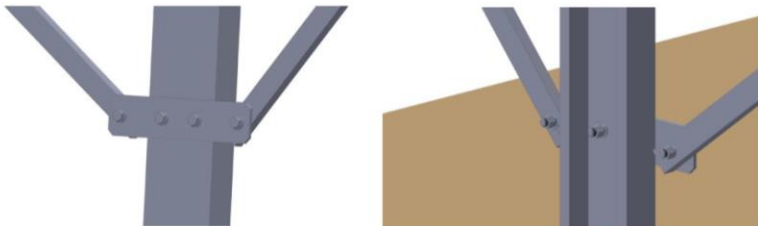
Yanglin Pole Ground Mounting is applicable for open field. It is designed for easy installation and lowering labor cost. This pole ground solar mounting system can be applied to large commercial scale installations.



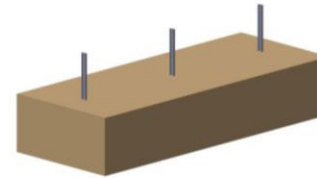
Brief Introduction:

Install Site: open ground field
 Module Tilt Angle: 5-40 degree
 Max Wind Speed: 60 m/s
 Snow Load: 1.4 KN/m²
 Material: hot dipped galvanized steel

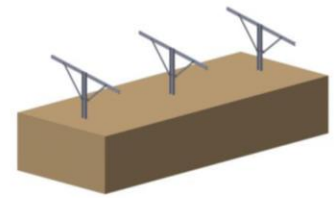
Detail:



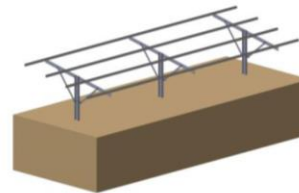
Installation Guide:



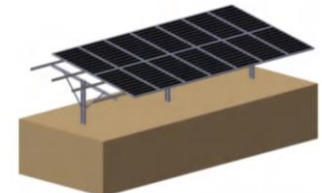
Step 1: Install support legs on ground.



Step 2: Fix steel beam and tilt leg on support.

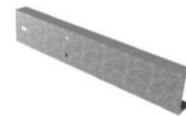


Step 3: Fix steel ground rail on beam one by one.



Step 4: Fix panel on rail until finished.

Components:



YL-SG3-L, Support Leg



YL-SG3-B, Steel Beam



YL-SG3-TL, Tilt Leg



YL-R04, Steel Rail



YL-IC-40C, Mid Clamp



YL-SC-40C, End Clamp

Yanglin Solar carport can be applied for commercial or residential installation. The whole structure is made of high strength extruding Aluminum alloy and the fastener is 304SS. We offer customized service for single, double, triple, four or N carports together to meet your request.

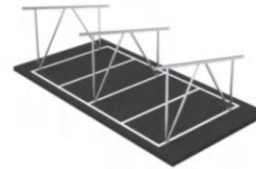


Brief Introduction:

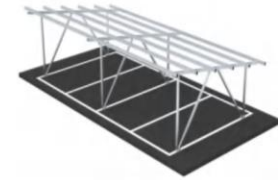
Install Site: Open Filed
 Module Tilt Angle: 5-20 degree
 Max Wind Speed: 60 m/s
 Snow Load: 1.4 KN/m²
 Material: Aluminum 6005-T5
 Foundation: Concrete block
 Parking Space: Customized



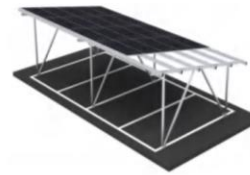
Installation Guide:



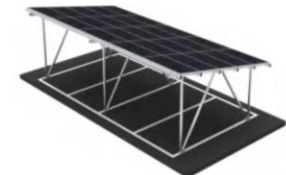
Step 1: Fix pre-assembled beam.



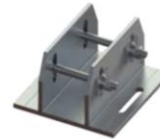
Step 2: Fix rail on beam.



Step 3: Fix panel on rail until finished.



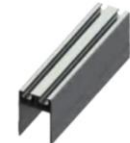
Components:



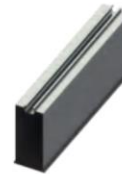
YL-ASC-FS02, Foundation Base



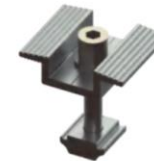
YL-ASC-FL/RL.TL, Front/Rear/Tilt leg



YL-ASC-B, Alu Beam



Aluminum carport rail



YL-MC-40, Mid Clamp



YL-EC-40, End Clamp



Steel Solar Carport

YANGLIN solar carport mounting system is a special designed water proof solution which is made of high strength carbon steel. It's a solar canopy solution that is highly configurable, easy to assemble and cost effective. With single, double, and large span options, it is the industry's most versatile solar carport solution.



Brief Introduction:

Module Tilt Angle: 5-20 degree
Max Wind Speed: 60 m/s
Snow Load: 1.4 KN/m2
Material: Carbon steel
Foundation: Concrete block
Parking Space: Customized



Steel Solar Carport



Installation Guide:



Step 1: Fix column and beam.



Step 2: Fix rail.



Step 3: Fix landscape and portrait rain gutter.



Step 4: Fix panels on rail until finished.

Components:



YL-SSC-C, Column



YL-SSC-B, Beam



YL-SSC-R, Rail



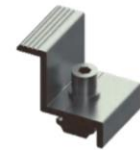
Landscape Rain Gutter



Portrait Rain Gutter



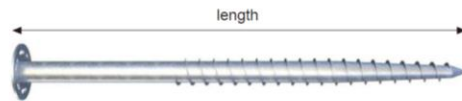
YL-MC-40, Mid Clamp



YL-EC-40, End Clamp

Yanglin provide ground screw with flange or ground screw without flange, now we have developed different series of ground screw to meet various application. Ground screw is not only used in solar panel system, it has widespread all over the world, but also for dense and even tarred surfaces. Applications are countless, from securing garden umbrellas, fences to carports, flag poles and traffic signs, advertising boards and even outdoor building for events and exhibitions for its quick and easy created and removed advantages.

Material: Q235
 Surface: hot dipped galvanized
 Length: 600-4000mm
 Shaft Diameter: 48-89mm

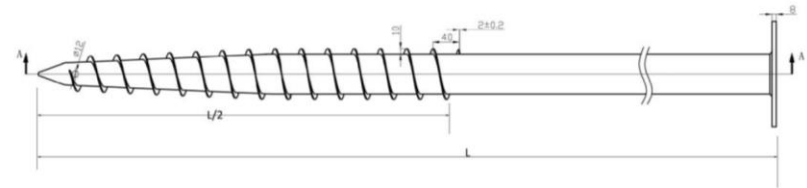


For Example

YL - GS - F 76 x 1600

- YL - YANGLIN ground screw
- GS - Series GS - Threaded fastening style blade
- F - Flange: F - flange, N - welding 3 nuts, U - U shape flange
- 76 - Shaft diameter
- 1600 - Ground screw length

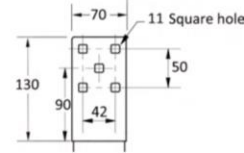
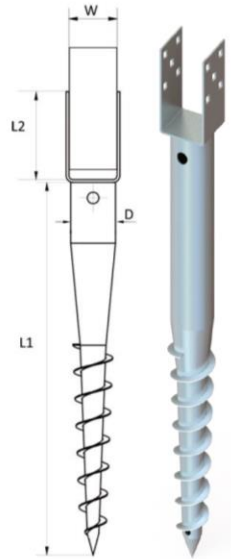
AS - Adjustable threaded fastening style
 DS - Double big blade
 FS - Four big blade
 WS - Wave style blade



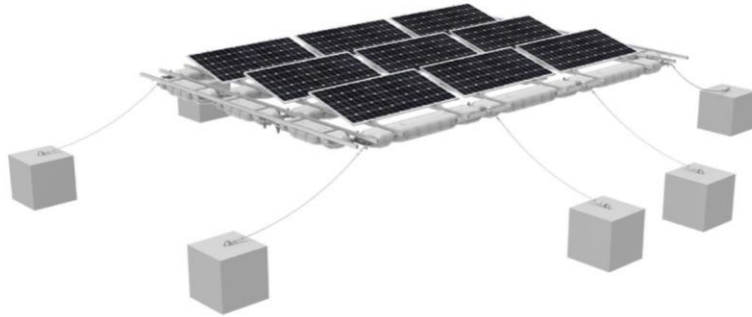
Flange as follow are all available.



	D	L1	L2	W
YL-GS-U60x550-71	60mm	550mm	130mm	71mm
YL-GS-U60x550-91	60mm	550mm	130mm	91mm
YL-GS-U60x730-71	60mm	730mm	130mm	71mm
YL-GS-U60x730-91	60mm	730mm	130mm	91mm
YL-GS-U60x865-71	60mm	865mm	130mm	71mm
YL-GS-U60x865-91	60mm	865mm	130mm	91mm



Floating PV Mounting refers to solar mounting system installation which is installed on the water surfaces, such as small lake, reservoir. Floating mounting is designed to solve the problem of large areas which are using by traditional mounting solution. It's made up of solar modules, combiner box, inverter floating structure etc.



Brief Introduction:

Installation site: Lake, reservoir
 Tilt angle: 10 or 15 degree
 Module type: Framed or framedless modules
 Panel orientation: Landscape
 Material: HDPE

Key Features:

1. Modular design makes installation easy and convenient.
2. Cover water surfaces to reduce evaporation.
3. Floater is made by HDPE which ensure long service time.
4. Strong weather ability, easy for operation and maintenance.
5. Decrease occupation of land resource.
6. Cool module and increase 10%-15% generation.
7. Reduce water evaporation and save water resources.

Components:



Main Floater



Walkway Floater



HDPE Bolt Set



Front Leg



Rear Leg



End Clamp



Steel Beam



Connector



Walkway

