



**GENERATIONS
ENERGY™**

2024 Wind & Solar Solutions



+64 21588987



Trevor@Generations.nz



www.Generations.nz



Bon Accord Way 30-32 Sophie Rd, Warkworth, 0982.
North Auckland, New Zealand.



**GENERATIONS
ENERGY™**

Why Choose GENERations?

- Environmental Commitment**
Committed to combating climate change, GENERations' solutions positively impact the environment and reduce costs.
- Industry Experts**
Operating since 2023, GENERations serves numerous clients with extensive knowledge and experience in renewable energy.
- Industry Standards**
Adhering to strict standards, GENERations ensures high-quality results and excellent service.
- All-In-One Solution**
From initial survey to project completion, GENERations has the expertise to manage it all seamlessly.
- Adaptable Solutions**
Customer-centered, GENERations adapts to client needs and goals, delivering first-class solutions on time and within budget.
- Global Partnerships**
Strong partnerships with leading technology brands ensure world-class solutions.



Patents and Certificates

❑ Wind Power

Our partners bring extensive experience in wind energy, offering advanced and reliable wind power solutions tailored to meet diverse energy needs.

❑ Solar Power

To support the transition to sustainable energy, our partners provide customized solar power solutions, leveraging cutting-edge technology to deliver optimal performance and efficiency for various applications.

❑ Wind & Solar Hybrid System

Combining the strengths of wind and solar, our partners design and implement hybrid systems that are adaptable to both grid-tied and off-grid configurations, ensuring continuous and reliable power generation.

❑ Storage

Recognizing the intermittent nature of renewable energy sources, our partners develop innovative storage solutions to ensure a consistent energy supply, utilizing advanced technologies to store excess energy efficiently.



Our collaboration with industry-leading partners ensures that Generations Ltd benefits from patented technologies and certified systems, guaranteeing quality and reliability in all our renewable energy projects.



**GENERATIONS
ENERGY™**



CONTENTS

- 1** Introduction of vertical fans
- 2** Introduction of horizontal fans
- 3** Off grid and on grid controller
- 4** Related real shot case display



VERTICAL AXIS WIND TURBINE

Utilizing the power of nature with science and technology


**GENERATIONS
ENERGY™**



Vertical Wind Turbine

X Series



Grace

- Fashion appearance, quite operation
- IP 54, smooth curve fiberglass blades
- Multi colors for options

Flexible

- Wide power and voltage range
- Workable to do hybrid with solar panel
- Compatible with lead-acid or lithium-ion batteries

Reliable

- High efficiency on low wind speed with 2.5m/s
- Suitable for all applications
- Long lifespan to 10 years and good quality ensure
- CE certified with ISO

Advanced

- Sustainable energy producing
- Environmental protecting for whole world
- Coreless PMG with low rpm
- Curved blades decrease wind resistance

Application Scenario



Household



Communication base station



Farm



RV



Yacht



Street lamp, monitoring



Vertical Wind Turbine

Parameter Table

Item	X3	X5	X8	X9
Started wind speed (m/s)	1.3 m/s	1.3 m/s	1.3 m/s	1.3 m/s
Cut-in wind speed (m/s)	2.5 m/s	2.5 m/s	2.5 m/s	2.5 m/s
Rated Wind speed (m/s)	12 m/s	12 m/s	12 m/s	12 m/s
Rated voltage(AC)	12V-24V	12V-24V	12V-48V	12V-48V
Rated power(W)	200W	400W	1500W	2000W
Max power(W)	210W	410W	1510W	2010W
Rotor Diameter of Blades(m)	0.38m	0.48m	0.92m	1.1m
Product assembly weight (Kg)	<22Kg	<35Kg	<50Kg	<85Kg
Blades height(m)	75cm	90cm	1.32m	1.64m
Safe wind speed (m/s)	≤40m/s			
Blades quantity	3			
Blade material	Nylon/Glass			
Generator	Three phase permanent magnet suspension motor			
Control System	Electromagnet			
Mount Height(m)	7~12m (9m)			
Generator protection grade	IP54			
Work environment temperature	-25~+45°C			
Work environment humidity	≤90%			
Altitude:	≤4500m			
Overspeed protection	Electromagnetic brake			
Overload protection	Electromagnetic brake and the unloading unit			

Vertical Wind Turbine

FX Series



Mixed color White



Green Red

Grace

- Fashion appearance, quite operation
- IP 54, smooth curve fiberglass blades
- Muti colors for options

Flexible

- Wide power and voltage range
- Workable to do hybrid with solar panel
- Compatible with lead-acid or lithium-ion batteries

Reliable

- High efficiency on low wind speed with 2.5m/s
- Suitable for all applications
- Long lifespan to 10 years and good quality ensure
- CE certified with ISO

Advanced

- Sustainable energy producing
- Environmental protecting for whole world
- Coreless PMG with low rpm
- Curved blades decrease wind resistance

Application Scenario



Household



Communication base station



Farm



RV



Yacht



Street lamp, monitoring



Vertical Wind Turbine

Parameter Table

Item	FX-600	FX-800	FX-1K	FX-2K	FX-3K	FX-5K	FX-10K	FX-15K
Started wind speed (m/s)	1.3 m/s	1.3 m/s	2 m/s	2 m/s	2 m/s	2 m/s	2 m/s	2 m/s
Cut-in wind speed (m/s)	2.5 m/s	2.5 m/s	3 m/s	3 m/s	3 m/s	3 m/s	3 m/s	3 m/s
Rated Wind speed (m/s)	10 m/s	10 m/s	10 m/s	10 m/s	12 m/s	12 m/s	12 m/s	12 m/s
Rated voltage(AC)	12V-48V	12V-48V	24V/48V	24V-96V	48V-220V	48V-220V	48V-220V	48V-220V
Rated power(W)	600W	800W	1000W	2000W	3000W	5000W	10KW	15KW
Max power(W)	650W	850W	1550W	2500W	3500W	6000W	12KW	17KW
Rotor Diameter of Blades(m)	0.6m	0.8m	1.1m	1.6m	1.92m	2m	2.4m	3m
Product assembly weight (Kg)	<26Kg	<27Kg	<45KG	<70KG	<152KG	<170KG	<225KG	<260KG
Blades colors	White/Green/Red	White	White	White	White	White	White	White
Blades height(m)	1.0m	1.32m	1.64m	1.92m	2.8m	3.0m	3.6m	5m
Safe wind speed (m/s)	≤40m/s							
Blades quantity	3							
Blade material	Glass Fiber							
Generator	3							
Control System	Electromagnet							
Mount Height(m)	2~12m							
Generator protection grade	IP54							
Work environment temperature	-25~+45°C							
Work environment humidity	≤90%							
Altitude	≤4500m							
Overspeed protection	Electromagnetic brake							
Overload protection	Electromagnetic brake and the unloading unit							

Vertical Wind Turbine

FS Series



Grace

- Fashion appearance, quite operation
- IP 54, smooth curve fiberglass blades
- Multi colors for options

Flexible

- Wide power and voltage range
- Workable to do hybrid with solar panel

Reliable

- High efficiency on low wind speed with 2.5m/s
- Suitable for all applications
- Long lifespan to 10 years and good quality ensure
- CE certified with ISO

Advanced

- Sustainable energy producing
- Environmental protecting for whole world
- Coreless PMG with low rpm

Application Scenario



Household



Communication base station



Farm



RV



Yacht



Street lamp, monitoring



Vertical Wind Turbine

Parameter Table

Item	FS-200	FS-600	FS-1000	FS-2000
Started wind speed (m/s)	1.3 m/s	1.3 m/s	1.5m/s	1.5m/s
Cut-in wind speed (m/s)	2.5 m/s	2.5 m/s	3m/s	3m/s
Rated Wind speed (m/s)	12 m/s	11 m/s	11m/s	11m/s
Rated voltage(AC)	12V-24V	12V-48V	24V-96V	24V-96V
Rated power(W)	200W	600W	1000w	2000w
Max power(W)	250W	650W	1050w	2050w
Rotor Diameter of Blades(m)	0.52m	0.52m	0.67m	0.8m
Product assembly weight (Kg)	<19Kg	<23Kg	<38Kg	<89Kg
Blades height(m)	1.05m	1.3m	1.5m	2m
Safe wind speed (m/s)	≤40m/s			
Blades quantity	2			
Blade material	Glass/Basalt			
Generator	Three phase permanent magnet suspension motor			
Control System	Electromagnet			
Mount Height(m)	7~12m (9m)			
Generator protection grade	IP54			
Work environment temperature	-25~+45°C			
Work environment humidity	≤90%			
Altitude:	≤4500m			
Overspeed protection	Electromagnetic brake			
Overload protection	Electromagnetic brake and the unloading unit			

Vertical Wind Turbine

FV Series



Grace

- Fashion appearance, quite operation
- IP 54, smooth curve fiberglass blades
- Multi colors for options

Flexible

- Wide power and voltage range
- Workable to do hybrid with solar panel

Reliable

- High efficiency on low wind speed with 2.5m/s
- Suitable for all applications
- Long lifespan to 10 years and good quality ensure
- CE certified with ISO

Advanced

- Sustainable energy producing
- Environmental protecting for whole world
- Coreless PMG with low rpm

Application Scenario



Household



Communication base station



Farm



RV



Yacht



Street lamp, monitoring



Vertical Wind Turbine

Parameter Table

Item	FV-50	FV-100	FV-200	FV-500	FV-1000	FV-1500	FV-2000
Started wind speed (m/s)	1.3 m/s	1.3 m/s	1.3 m/s	1.3 m/s	1.3 m/s	1.3 m/s	1.3 m/s
Cut-in wind speed (m/s)	2.5 m/s	2.5 m/s	2.5 m/s	2.5 m/s	2.5 m/s	2.5 m/s	2.5 m/s
Rated Wind speed (m/s)	12 m/s	12 m/s	12 m/s	12 m/s	12 m/s	12 m/s	12 m/s
Rated voltage(AC)	12V-24V	12V-24V	12V-24V	12V-48V	12V-48V	12V-48V	12V-48V
Rated power(W)	50W	100W	200W	500W	1000W	1500W	2000W
Max power(W)	55W	115W	250W	550W	1050W	1550W	2050W
Product assembly weight (Kg)	<12Kg	<15Kg	<24Kg	<25Kg	<30Kg	<75Kg	<95Kg
Blades height(m)	1m	1.15m	1.28m	1.48m	1.6m	1.83m	2.15m
Safe wind speed (m/s)	≤40m/s						
Blades quantity	2						
Blade material	Glass/Basalt						
Generator	Three phase permanent magnet suspension motor						
Control System	Electromagnet						
Mount Height(m)	7~12m (9m)						
Generator protection grade	IP54						
Work environment temperature	-25~+45°C						
Work environment humidity	≤90%						
Altitude:	≤4500m						
Overspeed protection	Electromagnetic brake						
Overload protection	Electromagnetic brake and the unloading unit						



Grace

- Fashion appearance, quite operation
- IP 54, smooth curve fiberglass blades
- Multi colors for options

Flexible

- Wide power and voltage range
- Workable to do hybrid with solar panel

Reliable

- High efficiency on low wind speed with 2.5m/s
- Suitable for all applications
- Long lifespan to 10 years and good quality ensure
- CE certified with ISO

Advanced

- Sustainable energy producing
- Environmental protecting for whole world
- Coreless PMG with low rpm

Application Scenario



Household



Communication base station



Farm



RV



Yacht



Street lamp, monitoring



Item	Tulip-600	Tulip-1000	Tulip-2000	ROSE-600	ROSE-1000
Started wind speed (m/s)	1.2m/s	1.3m/s	1.8m/s	1.3m/s	1.3m/s
Cut-in wind speed (m/s)	2m/s	3.5m/s	3.5m/s	2.5m/s	2.5m/s
Rated Wind speed (m/s)	11m/s	12m/s	12m/s	12m/s	12m/s
Rated voltage(AC)	12V-24V	12V-24V	24V-48V	12V-24V	12V-24V
Rated power(W)	600W	1000W	2000W	600W	1000W
Max power(W)	650W	1050W	2050W	650W	1050W
Rotor Diameter of Blades(m)	0.3m	0.52m	1m	0.42m	0.53m
Product assembly weight (Kg)	20kg	22kg	120kg	8kg	25kg
Blades height(m)	0.68m	1.1m	1.7m	0.65m	1.3m
Safe wind speed (m/s)	≤40m/s				
Blades quantity	2			3	
Blade material	Glass Fiber				
Generator	Three phase permanent magnet suspension motor				
Control System	Electromagnet				
Mount Height(m)	7~12m (9m)				
Generator protection grade	IP54				
Work environment temperature	-25~+45°C				
Work environment humidity	≤90%				
Altitude:	≤4500m				
Overspeed protection	Electromagnetic brake				
Overload protection	Electromagnetic Brake And The Unloading Unit				

Vertical Wind Turbine

FH Series



Grace

- Fashion appearance, quiet operation
- IP 54, smooth curve fiberglass blades
- Multi colors for options

Flexible

- Wide power and voltage range
- Workable to do hybrid with solar panel
- Compatible with lead-acid or lithium-ion batteries

Reliable

- High efficiency on low wind speed with 2.5m/s
- Suitable for all applications
- Long lifespan to 10 years and good quality ensure
- CE certified with ISO

Advanced

- Sustainable energy producing
- Environmental protecting for whole world
- Coreless PMG with low rpm
- Curved blades decrease wind resistance

Application Scenario



Household



Communication base station



Farm



RV



Yacht



Street lamp, monitoring



Vertical Wind Turbine

Parameter Table

Item	FH-400	FH-600	FH-800
Started wind speed (m/s)	1.3m/s	1.3m/s	1.3m/s
Cut-in wind speed (m/s)	2.5m/s	2.5m/s	2.5m/s
Rated Wind speed (m/s)	12v/24v	12v/24v/48v	12v/24v/48v
Rated voltage(AC)	400W	600W	800W
Rated power(W)	450W	650W	850W
Max power(W)	10m/s	10m/s	10m/s
Rotor Diameter of Blades(m)	0.6m	0.6m	0.8m
Product assembly weight (Kg)	21kg	24kg	26kg
Blades height(m)	1m	1m	1.3m
Blade number	3		
Blade material	aluminium alloy		
Generator	Three phase permanent magnet suspension motor		
Control System	Electromagnet		
Insulation	auto up-wind		
Tower	Insulation		
Working Temperature	-25~+45°C		

Vertical Wind Turbine

FH Series



Grace

- Fashion appearance, quite operation
- IP 54, smooth curve fiberglass blades
- Multi colors for options

Flexible

- Wide power and voltage range
- Workable to do hybrid with solar panel
- Compatible with lead-acid or lithium-ion batteries

Reliable

- High efficiency on low wind speed with 2.5m/s
- Suitable for all applications
- Long lifespan to 10 years and good quality ensure
- CE certified with ISO

Advanced

- Sustainable energy producing
- Environmental protecting for whole world
- Coreless PMG with low rpm
- Curved blades decrease wind resistance

Application Scenario



Household



Communication base station



Farm



RV



Yacht



Street lamp, monitoring



Vertical Wind Turbine

Parameter Table

Item	FH-1000	FH-2000	FH-3000	FH-5000	FH-8000
Started wind speed (m/s)	3m/s	3m/s	3m/s	3m/s	3m/s
Cut-in wind speed (m/s)	4m/s	4m/s	4m/s	4m/s	4m/s
Rated Wind speed (m/s)	11m/s	11m/s	11m/s	11m/s	11m/s
Rated voltage(AC)	48V	48V-96V	48V-220V	96V-360V	96V-360V
Rated power(W)	1000W	2000W	3000W	5000W	8000W
Max power(W)	1200W	2200W	3500W	5500W	8500W
Rotor Diameter of Blades(m)	1.4m	1.8m	2.0m	2.6m	3m
Product assembly weight (Kg)	60kg	120kg	190kg	330kg	360kg
Blades height(m)	2.0m	2.8m	3.2m	4.2m	4.5m
Blades colors	White/Multicolor				
Safe wind speed (m/s)	≤55m/s				
Blades quantity	3 Blades (Can Increase)				
Blade material	Aviation Aluminum Alloy				
Generator	Three phase permanent magnet suspension motor				
Control System	Electromagnet				
Mount Height(m)	6~20m (12m)				
Generator protection grade	IP54				
Work environment temperature	-40~+80°C				
Work environment humidity	≤90%				
Altitude:	≤4500m				
Overspeed protection	Electromagnetic brake				
Overload protection	Electromagnetic Brake And The Unloading Unit				

Vertical Wind Turbine

FH Series



Grace

- Fashion appearance, quiet operation
- IP 54, smooth curve fiberglass blades
- Multi colors for options

Flexible

- Wide power and voltage range
- Workable to do hybrid with solar panel
- Compatible with lead-acid or lithium-ion batteries

Reliable

- High efficiency on low wind speed with 2.5m/s
- Suitable for all applications
- Long lifespan to 10 years and good quality ensure
- CE certified with ISO

Advanced

- Sustainable energy producing
- Environmental protecting for whole world
- Coreless PMG with low rpm
- Curved blades decrease wind resistance

Application Scenario



Household



Communication
base station



Farm



RV



Yacht



Street lamp,
monitoring



Vertical Wind Turbine

Parameter Table

Item	FH-10K	FH-20K	FH-30K	FH-50K
Started wind speed (m/s)	4m/s	4m/s	4m/s	4m/s
Cut-in wind speed (m/s)	5m/s	5m/s	5m/s	5m/s
Rated Wind speed (m/s)	12m/s	12m/s	12m/s	12m/s
Rated voltage(AC)	220V-380V	220V-380V	380V	380V
Rated power(W)	10KW	20KW	30KW	50KW
Max power(W)	11KW	22KW	30.5KW	55.5KW
Rotor Diameter of Blades(m)	4.0m	5.0m	5.0m	6m
Product assembly weight (Kg)	950kg	1560kg	2000kg	2800kg
Blades height(m)	6.0m	7.0m	10m	15m
Blades colors	White/Multicolor			
Safe wind speed (m/s)	≤55m/s			
Blades quantity	3 Blades (Can Increase)			
Blade material	Aviation Aluminum Alloy			
Generator	Three phase permanent magnet suspension motor			
Control System	Electromagnet			
Mount Height(m)	6~20m (12m)			
Generator protection grade	IP54			
Work environment temperature	-40~+80°C			
Work environment humidity	≤90%			
Altitude:	≤4500m			
Overspeed protection	Electromagnetic brake			
Overload protection	Electromagnetic Brake And The Unloading Unit			

Vertical Wind Turbine

Q Series



Grace

- Fashion appearance, quite operation
- IP 54, smooth curve fiberglass blades
- Multi colors for options

Flexible

- Wide power and voltage range
- Workable to do hybrid with solar panel
- Compatible with lead-acid or lithium-ion batteries

Reliable

- High efficiency on low wind speed with 2.5m/s
- Suitable for all applications
- Long lifespan to 10 years and good quality ensure
- CE certified with ISO

Advanced

- Sustainable energy producing
- Environmental protecting for whole world
- Coreless PMG with low rpm
- Curved blades decrease wind resistance

Application Scenario



Household



Communication
base station



Farm



RV



Yacht



Street lamp,
monitoring



Vertical Wind Turbine

Parameter Table

Item	Q1-400	Q3-600	Q3-800	Q3-5K	Q5-1K	Q5-2K
Started Wind Speed	1.3 m/s	1.3 m/s	1.3 m/s	2m/s	2m/s	2 m/s
Cut-in Wind Speed	2.5 m/s	2.5 m/s	3 m/s	4m/s	3 m/s	4 m/s
Rated Wind Speed	12 m/s	12 m/s	12 m/s	12m/s	12 m/s	12 m/s
Rated Voltage(AC)	12V-24V	12V-24V	12V-24V	24V	24V	24V
Rated Power	400W	600W	800W	5KW	1KW	2KW
Max Power	450W	650W	850W	5.5KW	1.5KW	2.5KW
Rotor Diameter of Blades	0.8m	1.0m	2m	4.4m	2m	3.38m
Product Assembly Weight	19kg	26kg	160kg	710kg	210kg	370kg
Number of Blades	3	3	3	3	3	3
Blades Height	0.8m	1.0m	2.3m	4.5m	2.3m	3.5m
Safe Wind Speed	≤40m/s					
Blades Colors	Red/ blue/ silver					
Blade Material	Aluminum alloy					
Generator	Three Phase Permanent Magnet Suspension Generator D					
Control System	Electromagnet					
Mount Height	2-30m					
Generator Protection Grade	IP54					
Work Environment Temperature	-40~+80°C					
Work Environment Humidity	≤90%					
Altitude	≤4500m					
Overspeed Protection	Electromagnetic Brake					
Overload Protection	Electromagnetic Brake And The Unloading Unit					

Vertical Wind Turbine

FR Series



Grace

- Fashion appearance, quite operation
- IP 54, smooth curve fiberglass blades
- Multi colors for options

Flexible

- Wide power and voltage range
- Workable to do hybrid with solar panel
- Compatible with lead-acid or lithium-ion batteries

Reliable

- High efficiency on low wind speed with 2.5m/s
- Suitable for all applications
- Long lifespan to 10 years and good quality ensure
- CE certified with ISO

Advanced

- Sustainable energy producing
- Environmental protecting for whole world
- Coreless PMG with low rpm

Application Scenario



Household



Communication base station



Farm



RV



Yacht



Street lamp, monitoring



Vertical Wind Turbine

Parameter Table

Item	FR-100	FR-200	FR-300	FR-500
Started Wind Speed	2 m/s	2m/s	2 m/s	2 m/s
Cut-in Wind Speed	3 m/s	3 m/s	3 m/s	4 m/s
Rated Wind Speed	11 m/s	11m/s	11 m/s	12 m/s
Rated Voltage(AC)	12V-24V	12V-24V	12V-24V	12V-24V
Rated Power	100W	200W	300W	500W
Max Power	150W	250W	350W	550W
Rotor Diameter of Blades	0.84m	0.84m	0.84m	0.84m
Product Assembly Weight	14kg	15Kg	16kg	18kg
Blades Height	0.6m	0.6m	0.6m	0.6m
Blades Colors	White/Green/Red			
Safe Wind Speed	≤40m/s			
Number of Blades	5			
Blade Material	Glass Fiber			
Generator	Three Phase Permanent Magnet Suspension Motor			
Control System	Electromagnet			
Mount Height	2~12m			
Generator Protection Grade	IP54			
Work Environment Temperature	-40~+80°C			
Work Environment Humidity	≤90%			
Altitude	≤4500m			
Overspeed Protection	Electromagnetic Brake			



HORIZONTAL AXIS WIND TURBINE

Utilizing the power of nature with science and technology



**GENERATIONS
ENERGY™**



Horizontal Wind Turbine

SUN Series



Grace

- Fashion appearance, quiet operation
- IP 54, smooth curve fiberglass blades
- Multi colors for options

Flexible

- Wide power and voltage range
- Workable to do hybrid with solar panel

Reliable

- High efficiency on low wind speed with 2.5m/s
- Suitable for all applications
- Long lifespan to 10 years and good quality ensure
- CE certified with ISO

Advanced

- Sustainable energy producing
- Environmental protecting for whole world
- Coreless PMG with low rpm

Application Scenario



Household



Communication base station



Farm



RV



Yacht



Street lamp, monitoring



Horizontal Wind Turbine

Parameter Table

Item	S2-400	FZ-600	SUN-800	S3-1000	SC-1000
Rated Power	400W	600W	800W	1000W	1000W
Maximum Power	410W	610W	850W	1050W	1250W
Blade Length	580mm	550mm	580mm	370mm	550mm
Rated Voltage	12-24V	12-24V	12-24V	12-48V	24-96V
Start-up Wind Speed	2m/s	2m/s	2m/s	2m/s	2m/s
Rated Wind Speed	13m/s	13m/s	13m/s	13m/s	12m/s
Product Assembly Weight	9.5kg	9.5kg	9.5kg	9.5kg	9.5kg
Number of Blades	3	5	6	8	6
Blades Material	Nylon Fiber				
Generator Type	Three Phase Permanent Magnet AC Synchronous Generator				
Magnet Material	NdFeB				
Generator Case	Casting Aluminum Alloy				
Control System	Electromagnetic/yaw				
Overspeed Protection	Electromagnetic brake				
Working Temperature	-40~+80°C				
Overload Protection	Electromagnetic Brake And The Unloading Unit				

Horizontal Wind Turbine

M Series



Grace

- Fashion appearance, quite operation
- IP 54, smooth curve fiberglass blades
- Multi colors for options

Flexible

- Wide power and voltage range
- Workable to do hybrid with solar panel

Reliable

- High efficiency on low wind speed with 2.5m/s
- Suitable for all applications
- Long lifespan to 10 years and good quality ensure
- CE certified with ISO

Advanced

- Sustainable energy producing
- Environmental protecting for whole world
- Coreless PMG with low rpm

Application Scenario



Household



Communication
base station



Farm



RV



Yacht



Street lamp,
monitoring



Horizontal Wind Turbine

Parameter Table

Item	M3-1000	M4-1500	M5-2000	FL-2500	FL-3000
Rated Power	1000W	1500W	2000W	1500W	2000W
Maximum Power	1250W	1550W	2050W	1650W	2500W
Blades height	0.81m	0.9m	1m	1.4m	1.6m
Rated Voltage	12-24V	12-24V	12-24V	12-48V	24-96V
Start-up Wind Speed	2m/s	2m/s	2m/s	2m/s	2m/s
Rated Wind Speed	13m/s	13m/s	13m/s	13m/s	12m/s
Product Assembly Weight	13kg	25kg	28kg	45kg	52kg
Number of Blades	3				
Blades Material	Nylon Fiber				
Generator Type	Three Phase Permanent Magnet AC Synchronous Generator				
Magnet Material	NdFeB				
Generator Case	Casting Aluminum Alloy				
Control System	Electromagnetic/yaw				
Overspeed Protection	Electromagnetic brake				
Working Temperature	-40~+80°C				
Overload Protection	Electromagnetic Brake And The Unloading Unit				

Horizontal Wind Turbine

FK Series



Grace

- Fashion appearance, quite operation
- IP 54, smooth curve fiberglass blades
- Multi colors for options

Flexible

- Wide power and voltage range
- Workable to do hybrid with solar panel
- Compatible with lead-acid or lithium-ion batteries

Reliable

- High efficiency on low wind speed with 2.5m/s
- Suitable for all applications
- Long lifespan to 10 years and good quality ensure
- CE certified with ISO

Advanced

- Sustainable energy producing
- Environmental protecting for whole world
- Coreless PMG with low rpm
- Curved blades decrease wind resistance

Application Scenario



Household



Communication base station



Farm



RV



Yacht



Street lamp, monitoring



Horizontal Wind Turbine

Parameter Table

Item	FK-1000	FK-2000	FK-3000	FK-5000	FK-8000	FK-10K	FK-15K	FK-20K
Rated Power	1000W	2000W	3000W	5000W	8000W	10KW	15KW	20KW
Maximum Power	1500W	2500W	3500W	5500W	8100W	12KW	16KW	25KW
Wheel Diameter	2.8m	3.2m	3.9m	4.8m	5.4m	5.6m	6.25m	8m
Blade Length	1.4m	1.6m	1.6m	1.9m	2.4m	2.4m	2.8m	3.5m
Rated Voltage	48V-96V	48V-220V	48V-220V	96V-380V	96V-380V	96V-380V	96V-380V	96V-380V
Start-up Wind Speed	3m/s	3m/s	4m/s	4m/s	4m/s	4m/s	4m/s	4m/s
Rated Wind Speed	10m/s	10m/s	12m/s	12m/s	12m/s	12m/s	12m/s	12m/s
Product Assembly Weight	52kg	60kg	102kg	260kg	350kg	380kg	582kg	850kg
Number of Blades	3							
Blades Material	Aviation Aluminum Alloy							
Generator Type	Three Phase Permanent Magnet AC Synchronous Generator							
Magnet Material	NdFeB							
Generator Case	Casting Aluminum Alloy							
Control System	Electromagnet							
Overspeed Protection	Electromagnetic brake							
Working Temperature	-25~+65°C							
Overload Protection	Electromagnetic Brake And The Unloading Unit							

Horizontal Wind Turbine

FD Series



Grace

- Fashion appearance, quite operation
- IP 54, smooth curve fiberglass blades
- Multi colors for options

Flexible

- Wide power and voltage range
- Workable to do hybrid with solar panel
- Compatible with lead-acid or lithium-ion batteries

Reliable

- High efficiency on low wind speed with 2.5m/s
- Suitable for all applications
- Long lifespan to 10 years and good quality ensure
- CE certified with ISO

Advanced

- Sustainable energy producing
- Environmental protecting for whole world
- Coreless PMG with low rpm
- Curved blades decrease wind resistance

Application Scenario



Household



Communication base station



Farm



RV



Yacht



Street lamp, monitoring



Horizontal Wind Turbine

Parameter Table

Item	FD-30K	FD-50K	FD-80K	FD-100K	FK-150K	FK-200K
Rated Power	30KW	50KW	80KW	100KW	150KW	200KW
Maximum Power	35KW	55KW	85KW	125KW	155KW	225KW
Wheel Diameter	10.1m	15.5m	18.6m	21.6m	23m	28m
Rated Voltage	220-600V	96V-380V	220V-600V	220V-600V	380V-600V	380V-600V
Start-up Wind Speed	4m/s	4m/s	4m/s	4m/s	4m/s	4m/s
Rated Wind Speed	12m/s	15m/s	15m/s	15m/s	15m/s	15m/s
Product Assembly Weight	2160kg	2950kg	4300kg	4900kg	5300kg	6000kg
Number of Blades	3					
Blades Material	Aviation Aluminum Alloy					
Generator Type	Three Phase Permanent Magnet AC Synchronous Generator					
Magnet Material	NdFeB					
Generator Case	Casting Aluminum Alloy					
Control System	Electromagnet					
Overspeed Protection	Electromagnetic brake					
Working Temperature	-25~+65°C					
Overload Protection	Electromagnetic Brake And The Unloading Unit					

PMG GENERAOR EXHIBITION

GENERATOR



100W-600W PMG



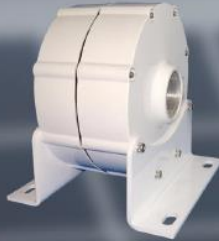
1KW-20KW
LOW RPM PMG



L STYLE 1KW-5KW PMG



M2 STYLE
300W- 600W PMG



500W-800W PMG



3KW-10KW PMG

GENRATOR CASE 01

10KW-300KW



GENRATOR CASE 02



ON GRID SYSTEM

ON GRID WIND SYSTEM



ON GRID WIND TURBINE CONTROLLER



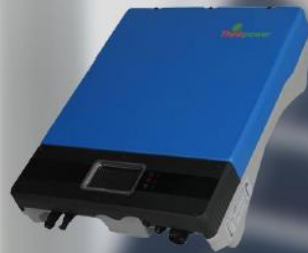
1KW-20KW LOW RPM PMG



10KW GRID CONTROLLER INVERTER



3KW-5KW CONTROLLER INVERTER



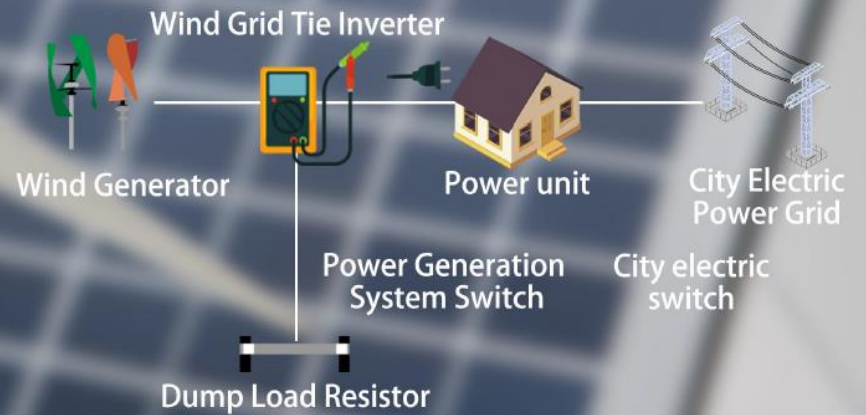
WIND INVERTER

ON GRID SOLAR INVERTER



ON-GRID WIND POWER GENERATOR SYSTEM

CONNECTION DIAGRAM

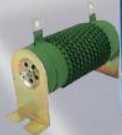


OFF GRID SYSTEM

OFF GRID WIND SYSTEM



MPPT100W-600W



MPPT HYBRID



MAX PWM

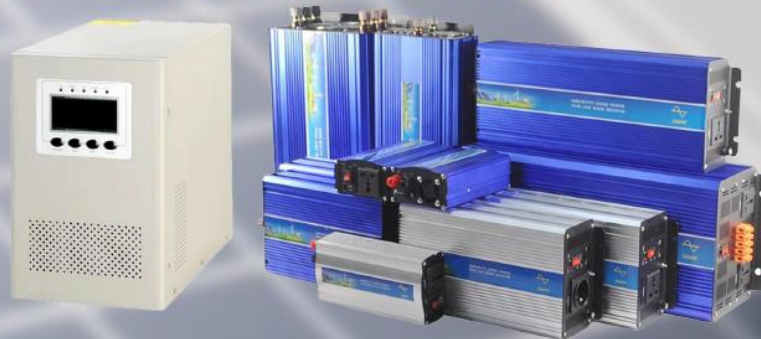


PWM 1KW-15KW



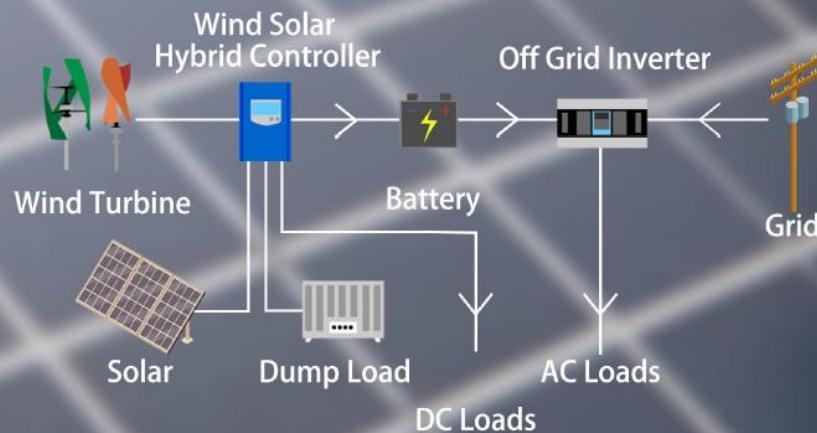
PWM 20KW-300KW

OFF GRID SOLAR INVERTER



OFF-GRID WIND POWER GENERATOR SYSTEM

CONNECTION DIAGRAM







Trusted New Zealand Partner:

